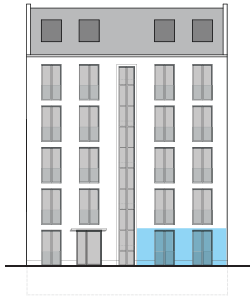


# WOHNEN AM NÖLDNERPARK

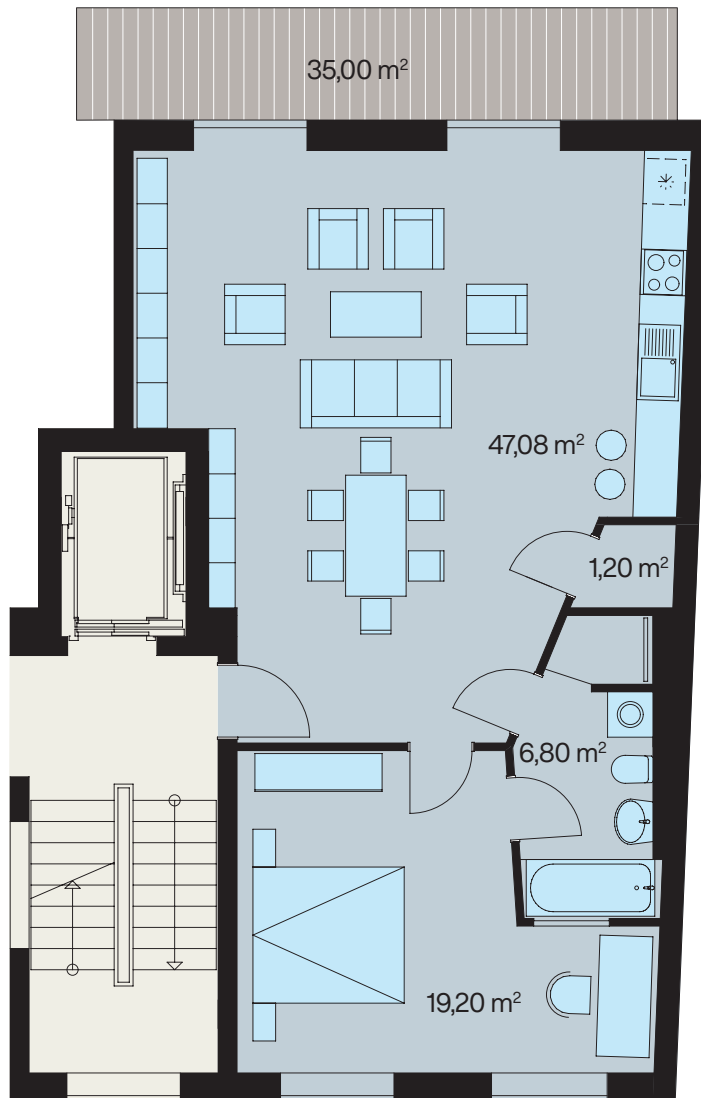
*Apartments*





# Grundriss Apartment 01

EG Rechts



Wohnen, Kochen	47,08 m <sup>2</sup>
Abstellraum	1,20 m <sup>2</sup>
Bad/WC	6,80 m <sup>2</sup>
Schlafen	19,20 m <sup>2</sup>
<b>Innen Gesamt</b>	<b>74,28 m<sup>2</sup></b>
Terrasse (50%)	35,00 m <sup>2</sup>
Keller (50%)	6,00 m <sup>2</sup>
<b>Außen Gesamt</b>	<b>41,00 m<sup>2</sup></b>
<b>Gesamt</b>	<b>94,78 m<sup>2</sup></b>