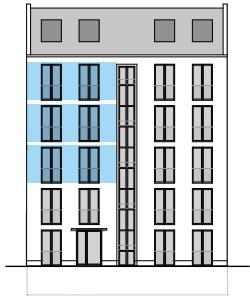


# WOHNEN AM NÖLDNERPARK

*Apartments*

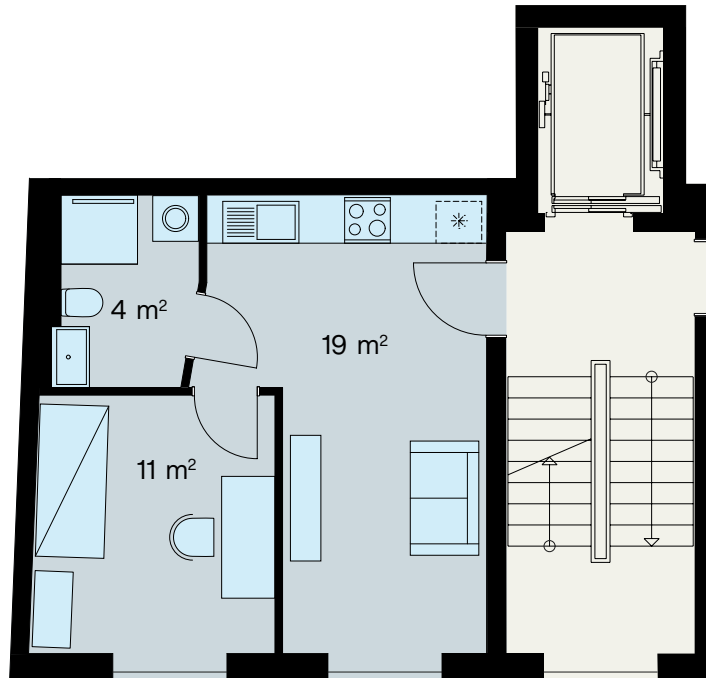




# Grundriss

## Apartments 06, 08, 10

2/3/4 OG Links



Wohnen, Kochen	19,00 m <sup>2</sup>
Zimmer	11,00 m <sup>2</sup>
Bad/WC	4,00 m <sup>2</sup>
<b>Innen Gesamt</b>	<b>34,00 m<sup>2</sup></b>
Keller (50%)	6,00 m <sup>2</sup>
<b>Außen Gesamt</b>	<b>6,00 m<sup>2</sup></b>
<b>Gesamt</b>	<b>37,00 m<sup>2</sup></b>