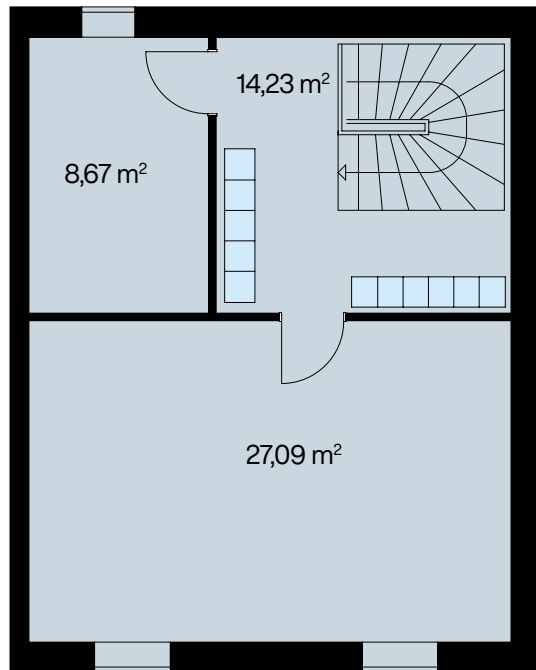
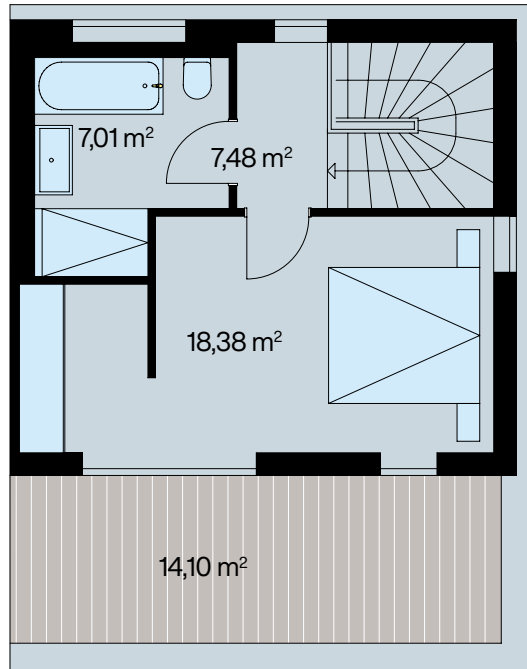


# WOHNEN AM NÖLDNERPARK

*Villa*

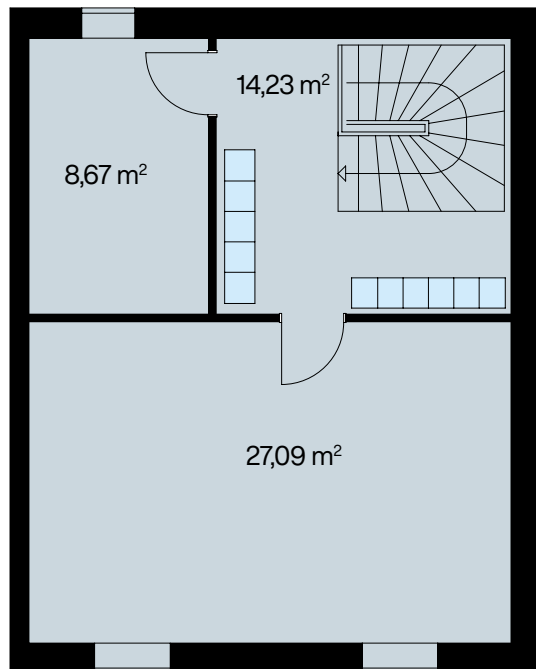
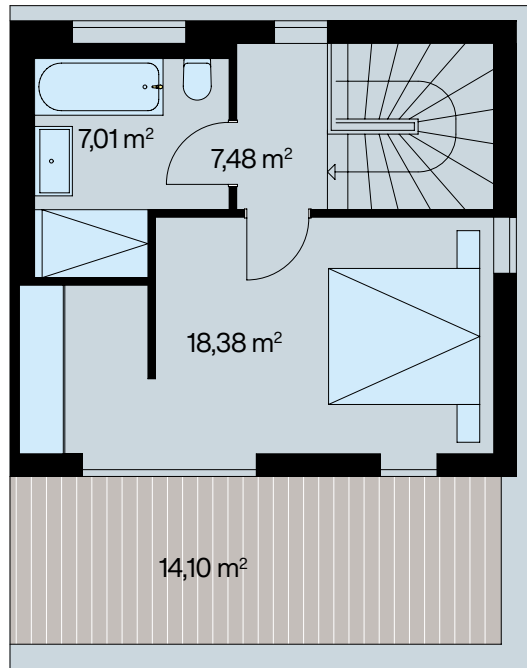
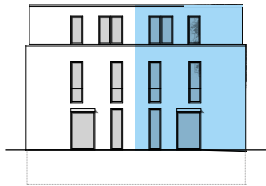




# Grundrisse

## Stadtvilla B (Links)

Flur, Treppe	7,48 m <sup>2</sup>
Schlafen	18,38 m <sup>2</sup>
Bad/WC	7,01 m <sup>2</sup>
<b>DG Gesamt</b>	<b>32,87 m<sup>2</sup></b>
Flur, Treppe	14,23 m <sup>2</sup>
Haustechnik	8,67 m <sup>2</sup>
Hobby	27,09 m <sup>2</sup>
<b>UG Gesamt</b>	<b>49,99 m<sup>2</sup></b>
<b>Innen Gesamt</b>	<b>185,40 m<sup>2</sup></b>
Gartenterrasse (50%)	23,10 m <sup>2</sup>
Dachterrasse (50%)	14,10 m <sup>2</sup>
Privatgarten (0%)	30,00 m <sup>2</sup>
<b>Außen Gesamt</b>	<b>67,20 m<sup>2</sup></b>
<b>Gesamt</b>	<b>204,00 m<sup>2</sup></b>



# Grundrisse

## Stadtvilla B (Links)

Flur, Treppe	7,48 m <sup>2</sup>
Schlafen	18,38 m <sup>2</sup>
Bad/WC	7,01 m <sup>2</sup>
<b>DG Gesamt</b>	<b>32,87 m<sup>2</sup></b>
Flur, Treppe	14,23 m <sup>2</sup>
Haustechnik	8,67 m <sup>2</sup>
Hobby	27,09 m <sup>2</sup>
<b>UG Gesamt</b>	<b>49,99 m<sup>2</sup></b>
<b>Innen Gesamt</b>	<b>185,40 m<sup>2</sup></b>
Gartenterrasse (50%)	23,10 m <sup>2</sup>
Dachterrasse (50%)	14,10 m <sup>2</sup>
Privatgarten (0%)	30,00 m <sup>2</sup>
<b>Außen Gesamt</b>	<b>67,20 m<sup>2</sup></b>
<b>Gesamt</b>	<b>204,00 m<sup>2</sup></b>